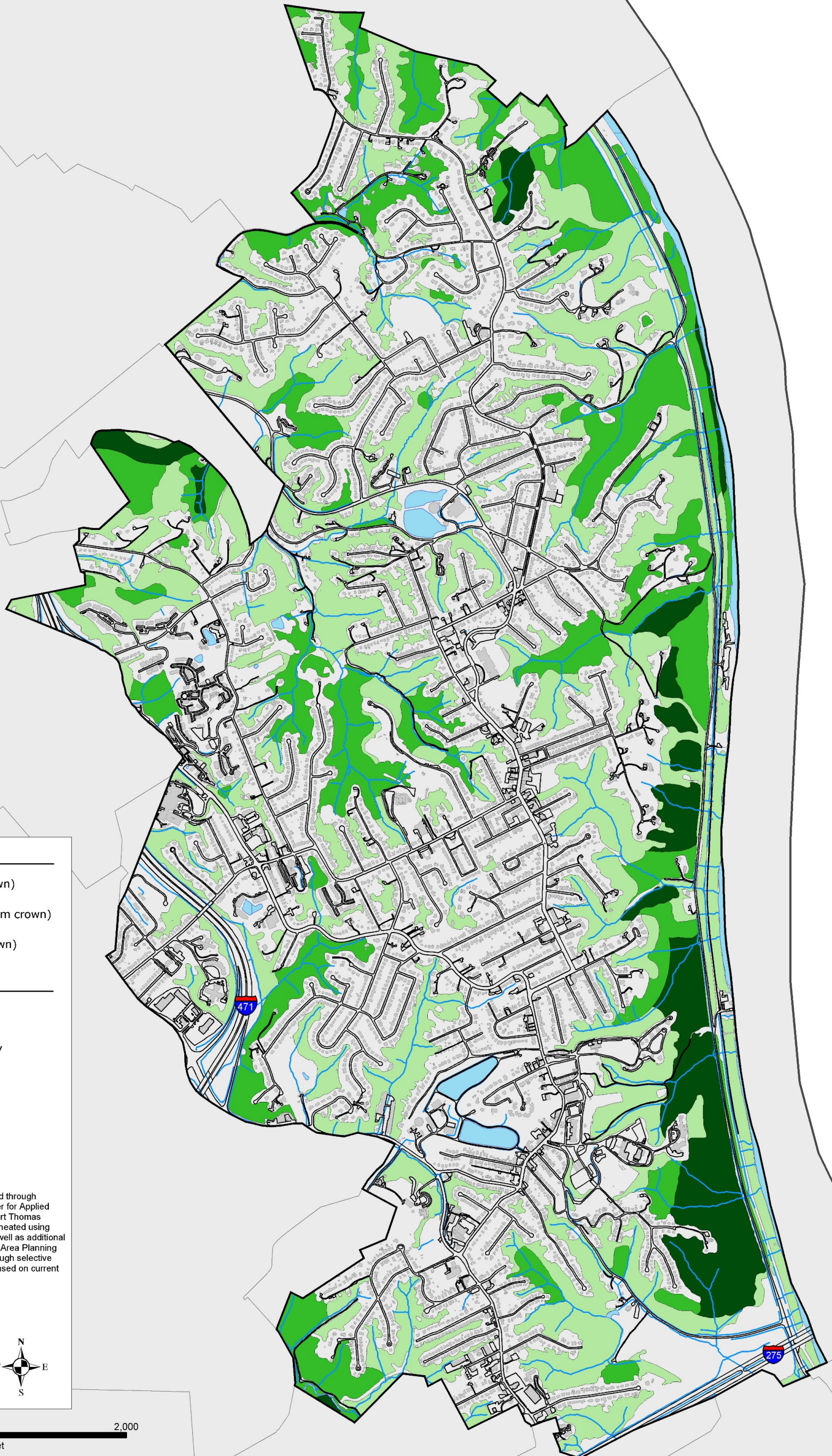










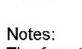
Forest Quality Assessment Fort Thomas - Campbell County, Kentucky



Forest Quality

-  Low Quality (small crown)
-  Medium Quality (medium crown)
-  High Quality (large crown)

Features

-  Campbell County
-  Fort Thomas Boundary
-  Buildings
-  Roads
-  Rivers and Streams
-  Lakes and Reservoirs

Notes:
The forest quality assessment was conducted through partnerships formed between the NKU Center for Applied Ecology, the City of Fort Thomas, and the Fort Thomas Tree Commission. Forested areas were delineated using high-resolution 1999 aerial photographs, as well as additional GIS data provided by the Northern Kentucky Area Planning Commission. Delineations were verified through selective ground truthing. Forest quality is primarily based on current tree crown size (small, medium, and large).

Center for Applied Ecology
Northern Kentucky University

July 2003

